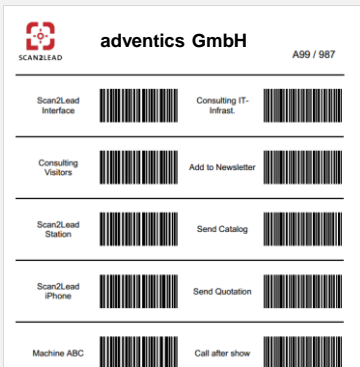


SCAN2LEAD COLLECT - ALL CONTACTS AT THE PUSH OF A BUTTON



- + ideal for the rapid acquisition of a large quantity of contacts from whom not much additional information is required, e.g. for usage by hostesses
- + scanning of barcodes with mobile mini handheld scanners
 - very simple handling (one button)
 - „data collector“: data is stored blindly on the device, i.e. the data is not displayed
 - by scanning additional barcodes of individually definable lead forms interest tags can be assigned for each visitor, e.g. pre-defined interest tags, follow-up activities etc.
- + no internet connection is required or computer / mobile device necessary, battery runs the whole show
- + data must be read out first at the Scan2Lead service desk, before it is then available in the Scan2Lead PORTAL for export and further post-processing.
- + access to the Scan2Lead PORTAL with all its features (automatic backup of captured data, data export, management of devices, graphical reports about your visitors etc.)
- + simple assignment of employees or scanning stations (e.g. product or oral presentations)



Contact & Consulting

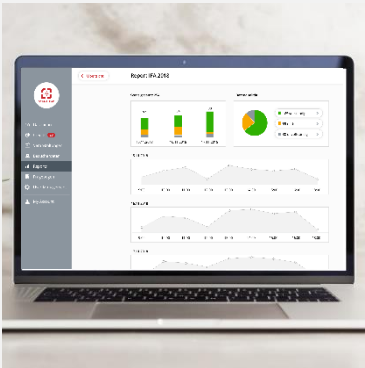
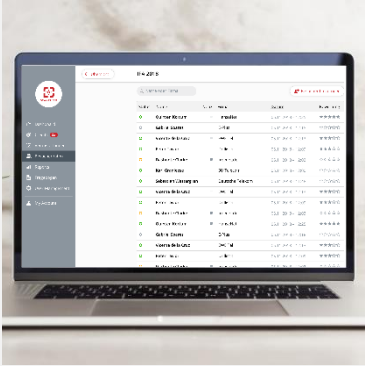
+49 89 4444 33 111

contact@scan2lead.com

www.scan2lead.com



SCAN2LEAD PORTAL - ALL CONTACTS WITH ONE CLICK



- + web-based online portal with customised login
- + key administration tool that is included in all solutions and cannot be booked separately
 - all visitor data is collected and stored centralised and in real time
 - data can easily be downloaded through an Excel file
 - configuration of an individual lead form
 - graphical reports about your visitors
 - management of all Scan2Lead devices, assignment to employees
 - access to test tickets and the Scan2Lead Help Center
- + to connect your own systems an interface is available upon request (for a fee)
- + access to the Scan2Lead PORTAL is possible at any time (web application)

Contact & Consulting

+49 89 4444 33 111

contact@scan2lead.com

www.scan2lead.com